

Wintringham

Annual Review
2018-2019

Celebrating
30 years



Contents

President's foreword	02
Who we are	04
Where we are	04
How we can help	05
2018/19 achievements	06
Building for the future	08
Partnerships create more homes in Shepparton	08
Coburg now home to second Wintringham site	09
Opportunity for change	10
Aged Care Royal Commission	10
Continuous improvement	12
Sites reaccredited to new standards	12
Setting us up for the future	12
Formalising our approach to inclusion	13
Celebrating our people	14
Three decades of service	14
30 years, 30 stories	16
Art Show tribute to Stephen's life	23
Lifetime of achievement	24
Our timeline	25
Financials	26

Cover: Nola from Williamstown loves her regular visit from George the dog, thanks to our Recreation team and Patient Paws.



Gerard Mansour, President.

President's foreword

In this, our 30th year of service, we have much to celebrate and be extremely proud of.

The Wintringham Board acknowledge the past year has been particularly busy, with many outstanding achievements and continued service growth.

Of particular significance was the Australian Government's Mid-Year Economic and Fiscal Outlook announcement that the residential aged care Homeless and Viability Supplements would increase by 30 per cent. We are pleased our many meetings with key stakeholders resulted in improved financial support for specialist providers that assist aged care residents who come from a homeless and marginalised background. Whilst this increase goes a way to maintain Wintringham's short-term financial viability, we continue advocating to resolve a number of structural issues impacting the long-term viability for specialist services such as Wintringham.

Given our organisation's track record for delivering outstanding accommodation options for our clients, several new projects are now underway. During the year, Federal Government funding

was secured to build a 20-bed residential aged care home in Shepparton. Combined with a \$10.5 million commitment from the Victorian State Government, Australian Nursing and Midwifery Federation (Victorian Branch), the Ian Potter Foundation and the John T Reid Charitable Trusts, we will also deliver 28 new housing units at the same site. These projects will further complement our existing Shepparton services.

Our long-standing partnership with the Alexander Miller Estate has also provided the foundation to develop additional housing in Geelong. Their \$2.5 million commitment, coupled with a \$6.5 million Victorian Property Fund grant, will allow us to build 22 housing units adjacent to our existing units in Highton. The project is now in town planning phase. Work also continues on our first interstate project in Tasmania, we look forward to commencing community care services there in 2020.

While in metropolitan Melbourne, thanks to the generosity of the Peter and Lyndy White

Foundation, Wintringham purchased a 35-unit property in Coburg. With the support of the Foundation, we will update, modernise and increase the number of units available for elderly people in Coburg and surrounds who desperately need support, and a safe place to call home. The property was re-named 'Lyndell White House' to reflect the White family's commitment to make a meaningful, positive and lasting impact in our community.

After almost 10 years of discussions with various Government departments, we are proud to have formed Wintringham's first 'Older Prisoner Support' team. Since February 2019, three staff have worked on providing assessment and advice on older prisoner's aged care needs and established transition support, so their aged care needs can be met in the community. As Victoria's ageing prison population continues to grow, this service will remain a key priority.

With continued growth in client services, it has become even

more crucial to look inward and focus our energy and resources on enhancing the IT systems that support our service delivery, allowing staff more time to spend with clients, and innovate. To support this multi-year Digital Transformation Project, we have gratefully received a \$1.8 million commitment from the J.O. & J.R. Wicking Trust.

Efforts to continuously improve, also carried through with the introduction of the new Aged Care Quality Standards and Charter of Aged Care Rights, which came into effect on 1 July 2019. Since our inception in 1989, Wintringham's focus has always been to work with the client to achieve mutually agreed and tailored outcomes. The new Standards and Charter now in place validate this approach, and motivate us to make further improvements. One example was the creation of our first 'Inclusion Statement', which reflects our organisation's commitment to ensure equality and equity for all.

Our submission and appearance at the Royal Commission into Aged Care Quality & Safety

was a welcome opportunity to promote the work we do, what makes our services and approach unique, while also advocating for our clients and all older Australians who are homeless or at risk of homelessness. Thank you to all staff that contributed to preparing the submission, to our Chief Executive Officer Bryan Lipmann AM and to Kate Rice Gilgunya Residential Manager for presenting so diligently at the Royal Commission on our behalf, and of course to our dedicated staff for doing their job every day with such professionalism, compassion and respect for our clients and their rights.

Sincere thanks also go to Jeffrey Gole, who has decided to step down as President of Wintringham after four years in the role. His guidance and support over this period has been invaluable and we are grateful that he remains a Board member.

It has been 30 years since Wintringham began in August 1989. It's an accomplishment we take great pride in celebrating, mainly because throughout this time we have helped countless

elderly people in need, and impacted their lives in both tangible and positive ways. The fact that we are still here and expanding our services is a testament to the dedication of staff members both past and present, our volunteers, as well as our supporters from government to philanthropy, industry, corporate business and fellow service providers.

The goal remains the same today, as it was 30 years ago, and that is to provide social justice and 'a home until stumps' for those aged 50-plus who are homeless or at risk of homelessness. We sincerely thank you for your continued support.

Finally, congratulations to our Chief Executive Officer Bryan Lipmann and the Executive Management of Michael Deschepper and Helen Small. Their ongoing leadership across the entire organisation is outstanding, and their commitment second to none. An enormous thanks to each and every staff member, without you we could not deliver a service that so genuinely respects the options, dignity and rights of all people. To our clients who entrust us with their care, thank you for giving us the opportunity, we will continue striving to deliver you the highest quality service that you all so deserve.

Gerard Mansour
President



Wintringham's first Older Prisoner Support team. Julie, Peta and Adelaide (L-R).

Who we are

Wintringham is:



A specialist not-for-profit welfare organisation.



Committed to providing older people exposed to homelessness with a range of high quality services.



Serving clients at every stage of need and provide them 'a home until stumps'.

We assertively advocate for over 50's who are homeless or at risk of homelessness to State and Federal Government, as well as in aged care, homelessness, housing and other forums. Our forward thinking approach has made us an international benchmark for action on elderly homelessness.

Where we are

We serve our clients from various locations across Victoria.



Supported Housing

Avondale Heights	Euroa	Lancefield
Ballarat	Flemington	Manifold Heights
Belmont	Frankston	Maryborough
Benalla	Geelong	Melbourne CBD
Bentleigh East	Gisborne	Romsey
Castlemaine	Heathcote	Shepparton
Coburg	Highton	St Arnaud
Delahay	Kensington	Williamstown

Residential Aged Care

Avondale Heights
Coburg
Dandenong
Flemington
Port Melbourne
Williamstown

Community Care Service Area

Wintringham services this area from various offices across Victoria.

Services include Outreach, Housing Support, Home Care Package delivery and Recreation.

INITIAL SUPPORT

Advice and Information

MONDAY - FRIDAY BUSINESS HOURS

Specialist team Phone advice and information about housing and support options

PHONE - 03 9034 4824

Connect with Services

MONDAY - FRIDAY BUSINESS HOURS

Access and support services providing short-term assistance Linking people to services and/or healthcare providers

Help to find Housing

MONDAY - FRIDAY BUSINESS HOURS

PLUS assistance to find affordable, long-term housing Outreach teams provide linkages to services

How we can help

We provide a range of assistance to help our clients live a good life.

ONGOING SUPPORT

Housing Support

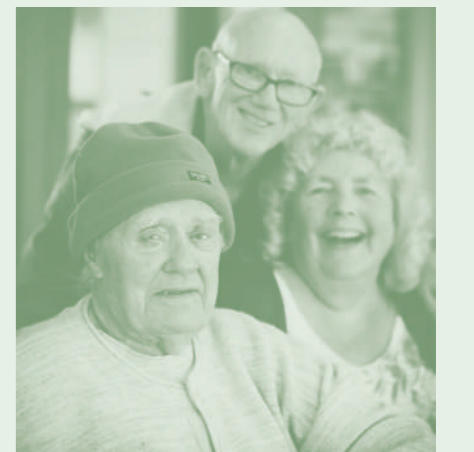
MONDAY - FRIDAY BUSINESS HOURS

Support to maximise health, wellbeing and to maintain tenancy

Home Care Packages

24 HOUR CARE

Promoting independent wellbeing at home Through appropriate packaged levels of care



Residential Aged Care

24 HOUR CARE

Assistance provided with daily living tasks On-site medical care available together with all accommodation needs

Social Housing

24 HOUR SUPPORT

Purpose built housing provided PLUS support services to enable people to live independently for as long as possible

Recreation Services

24 HOUR SUPPORT

Tailored leisure & daily living activities Aimed at enhancing self-esteem, inclusion & participation

2018/19 achievements

- Federal Government funding confirmed for a 20-bed residential aged care service in Shepparton
- Funding received to build 28 independent living units also in Shepparton thanks to the Victorian State Government, Australian Nursing & Midwifery Federation (Victorian branch), Ian Potter Foundation and John T Reid Charitable Trusts
- Wintringham advocacy results in Residential Aged Care Homeless Supplement and Viability Supplement being increased by 30 per cent
- Wintringham's first 'Older Prisoner Support' team formed
- Purchased 35-unit property in Coburg thanks to a very generous donation from the Peter & Lyndy White Foundation
- Funding confirmed from J.O. & J.R. Wicking Trust to support Wintringham's Digital Transformation Project, which will improve efficiency of organisational systems and processes
- Launch of Wintringham Inclusion Statement
- New Aged Care Quality Standards and Charter of Aged Care Rights introduced
- Aged Care Royal Commissioner Richard Tracey AM RFD QC visited Wintringham Port Melbourne Hostel
- Bryan Lipmann AM and Kate Rice presented at the Royal Commission hearings on Person Centred Care in Perth
- Wintringham Art Show during Homelessness Week - special tribute, celebrating the life of Wintringham client Stephen Whittaker
- Celebrated 30 years of Wintringham services
- Port Melbourne Hostel, Williamstown Hostel, McLean Lodge and Gilgunya all reaccredited according to new Aged Care Quality Standards
- Commenced services as a Disability Provider and passed the first accreditation under the Standards for Disability Services
- Wintringham's State funded Support Programs achieved their first accreditation under Victoria's Human Services Standards
- Bryan Lipmann AM receives Beth Thomson Lifetime Achievement Award at the 2019 Victorian Homelessness Achievement Awards, presented by the Council for Homeless Persons
- Wintringham selected as one of ten services Australia-wide to operate a Severe Dementia Care Unit. Our six-bed facility will be added to McLean Lodge in Flemington.



Building for the future

Creating more homes for those in need.

Partnerships create more homes in Shepparton

Great partnerships have made the construction of two new projects in Shepparton a reality.

Announced in October 2018, Wintringham will build 28 new independent living units in Wyndham Street Shepparton, thanks to \$10.5 million in funding granted from the Victorian State Government, the Australian Nursing and Midwifery Federation (ANMF) Victorian Branch, the Ian Potter Foundation, and John T Reid Charitable Trusts.

The site is adjacent to Wintringham's current housing and support services.

New homes will be allocated to elderly homeless people or those at risk of homelessness, with priority being given to those who have experienced family violence. Construction is expected to start in 2020 with the first residents being housed in early 2022.

Then Federal Minister for Senior Australians and Aged Care, the Hon. Ken Wyatt AM MP, also announced in March, that Wintringham will receive 20 bed licences and \$4.7 million in capital funding to build a residential aged care facility, to be co-located with the proposed housing development in Wyndham Street. Both projects are in the process of being designed and planned.

"We are proud to already be serving the Shepparton community, and these projects mean we can further

extend our housing and support services for those in need," said Deputy CEO Michael Deschepper.

"This is a powerful example of how various governments, private and community funds can be used in partnership to deliver much needed services to regional Victoria."



Hon. Damian Drum MP meets Bryan at the site for a new residential aged care home in Shepparton.



Site now renamed Lyndell White House.

Coburg now home to second Wintringham site

Wintringham recently purchased Irving Benson Court in Hudson Street Coburg, a 35-unit independent living residence for disadvantaged people aged over 50, thanks to the very generous support of the Peter and Lyndy White Foundation.

"We're excited by the possibilities this site gives us to update, modernise and potentially increase the number of units available to deserving people in our community who desperately need support, and a long-term home," said Elizabeth Davis, Head of Finance.

"All existing residents were assured affordable housing now and into the future as a tenant of Wintringham. Our motto always has and always will be to provide a home until stumps for our clients.

"We're also both humbled and thankful that Peter and Lyndy White have chosen to once again support our work, by donating the funds to make this purchase and renovation possible. This is the third project the Foundation has provided significant funding for, so we thought it fitting to re-name this property - Lyndell White House."

Over time, Wintringham will modernise the site. Before renovations commence, residents will be offered suitable alternative accommodation to relocate to, and when works are completed by 2022, they will be able to return.



Opportunity for change

Our chance to advocate for those
without a voice.

Aged Care Royal Commission

2019 has been a year of great challenge and opportunity for the Aged Care sector. In February, as part of the commencement phase of the Royal Commission into Aged Care Quality and Safety, a Service Provider Survey was completed for every aged care service and outlet that Wintringham operates.

Commissioner Richard Tracey AM RFD QC then visited Port Melbourne Hostel on 5 March, 2019. This was an excellent opportunity to talk about our unique approach to supporting the elderly homeless and disadvantaged.

Wintringham was then given the privilege to attend the Royal Commission into Aged Care Quality and Safety hearings in Perth on 25 June 2019, which focused on person centred care.

Chief Executive Officer and Founder Bryan Lipmann AM and Gilgunya Residential Site Manager Kate Rice provided sector best practice examples, using their 30-plus years experience working with older people from a homeless background.

“Not only were we grateful to share personal statements that demonstrate how Wintringham provides services, but also to have used this opportunity to advocate for our clients and all older people who are homeless or at risk of homelessness,” said Bryan.

“I can’t put into words how it felt in that moment when Commissioner Tracey said: ‘Mr Lipmann and Ms Rice, I think I speak for both of us (Commissioners) when I say we’re in awe of the work you’re doing in the community, and the care you’re providing for people who otherwise simply, as you’ve said, would be on the streets.’

“I am so deeply honoured by the work all Wintringham staff do to bring this vision to life, to help make that moment possible. I recognise every staff member’s committed, loyal and caring approach to each and every one of our clients, and it is this compassion and respect that underpins all of our work.”

We are hopeful that Wintringham’s contribution to the Royal Commission will impact countless elderly homeless men and women in need of a home until stumps for years to come; a legacy we are all extremely proud of.

On a side note, Wintringham was saddened by the sudden passing of Commissioner Tracey in October 2019. “In the relatively short time I had the privilege of knowing him, I was struck by the sincerity of his concern for the elderly homeless and his genuine intellectual interest in understanding how we are able to provide care to this overlooked group of Australians. His gentleness to our residents when he was at our Port Melbourne home was noted by us all,” said Bryan.



Continuous improvement

Striving to make our organisation the best it can be for our clients and staff.

Sites reaccredited to new standards

From July 2019 through to September, four Wintringham residential aged care sites underwent unannounced reaccreditation audits, and all four successfully gained reaccreditation.

The Aged Care Quality and Safety Commission assessed Port Melbourne Hostel, McLean Lodge, Williamstown Hostel and Gilgunya, to ensure the quality of care and services for clients is in accordance with the new Australian Aged Care Quality Standards.

“Congratulations to all our Site Managers; Carolyn Russell, Amanda Campbell, Danny Stevens, Kate Rice, and all staff at every site and those who assisted in preparation for the audits,” said Phillip Goulding, Deputy General Manager Operations.

“It is always motivating and reaffirming to know that the Commission has received such positive feedback about the quality of our services - direct from our clients.

“Well done and thank you to all staff for maintaining such high quality environments for our residents every day”.

Setting us up for the future

With every month and year that passes, Wintringham continues to grow from strength to strength. With this rapid growth, also comes the realisation that various

organisational processes and systems have struggled to keep pace.

Enter the Digital Transformation Project, which is focused on significantly reducing the amount of manual, paper-based and temporary solutions that over time have created complicated and time consuming processes for staff.

“As an organisation, our primary focus has always been to put whatever dollars we have into outcomes that directly benefit our clients. But the time has now come to also dedicate significant resources to the systems that staff use every day,” said Technology Manager Shane Van Houten.

“The objective of this project is to increase the duration of staff interactions with clients, and to create business systems and processes that will set us up for the future. We want Wintringham to strive for continued excellence by being efficient, adaptable and effective.

“To ensure project success we have secured \$1.8 million of funding from the J.O. and J.R. Wicking Trust over five years. This funding demonstrates the trust and commitment Wicking has in Wintringham to adapt in an ever-changing industry and environment. We are sincerely grateful for their support,” said Shane.

The key areas this five-year project will look at are Client Services, Finance, Human Resources, Support Services and Other Systems. The first areas of focus are Client Services and Finance; they will roll out together in a phased approach throughout 2020 and beyond.

Formalising our approach to inclusion

Central to Wintringham’s ethos and culture is a non-judgmental, open and inclusive approach taken with all prospective and current clients.

“With the new Aged Care Quality Standards and updated Charter of Aged Care Rights coming into effect from 1 July 2019, it was the perfect opportunity for us as an organisation to formalise what we already do every day,” said Wintringham General Manager Operations, Helen Small.

“Regardless of individual backgrounds, experiences or beliefs, staff, volunteers and clients are always encouraged to listen, understand and respect the individual. Our Inclusion Statement, created in May 2019, was simply an additional way for the organisation to formally demonstrate our commitment to equality for all.”

“When you visit our sites and offices now, you may also see three small flags (Aboriginal, Torres Strait Islands and LGBTIQ+) on our reception desks as a visual reminder that we are an inclusive organisation.

“To celebrate this, our staff, volunteers and residents got together to talk about what ‘inclusion’ means to them, you can watch the video here: <https://bit.ly/33YsUWF>

Inclusion Statement:

“Wintringham is committed to Equal Opportunity for all. We value and embrace differences in gender, gender identity, ethnicity, culture, ability, religion, beliefs and sexual orientation.

We are committed to the safety of our older persons and have zero tolerance for elder abuse.

We acknowledge the Aboriginal people as the Traditional Custodians of the lands on which our services are delivered. We pay our respects to their Elders, past, present and future.

Wintringham recognises that diversity and inclusion contribute to help achieve our goals and vision of ending homelessness for people aged 50-plus.”



Lenny from Shepparton, proud of his Aboriginal heritage.

Celebrating our people

Our people, both clients and staff are the heart and soul of Wintringham.

Three decades of service

Founder Bryan Lipmann AM became frustrated watching elderly men and women die in homeless persons' night shelters, unable to access mainstream aged care services. Elderly residents were thought of as first and foremost 'homeless', and aged care services wanted nothing to do with them. This was the catalyst for Wintringham being created in 1989.

"I am so proud, and feel honoured to have such loyal, passionate and caring staff who have helped us on our mission for social justice," said Bryan.

This passion has seen Wintringham grow from one employee in 1989, to 680 now supporting over 2,000 homeless or at risk residents and clients throughout Victoria every day.

"This organisation wasn't something that happened overnight - it's been a lot of hard work with many, many highs and lows, and we've lost many along the way who will be remembered and cherished always."

Here's to another 30 years of Wintringham serving those most in need.

To view our latest promotional video that describes our values of Options, Dignity and Rights and commemorates our 30 years of service, visit: <https://bit.ly/2Piyijh>



Birthday party at at Head Office.



President Gerard Mansour celebrating our birthday with staff at Ron Conn.



Gilgunya's Jan and Bob get in the spirit.



Clients from housing in Shepparton enjoy the celebrations.



Birthday party at at Keysborough office.



Celebrating our people

30 years, 30 stories

On 21 August, Wintringham celebrated 30 years since the organisation began in 1989.

In order to commemorate this milestone we shared the stories of Wintringham legends, both living and past through Wintringham's social media channels.

"Despite the difficult experiences and hardship endured throughout their lifetime, our clients were willing to share their personal story. Some found solace in knowing people were taking an interest in their life, while others wanted to change the stereotype; how did homelessness affect them? How could it happen so quickly?" said Communications Manager Christina Bucci.

"These stories celebrate the people we help every day, while also acknowledging the diverse range of services we provide from supported housing to outreach, community care, residential care and recreation, while also breaking down some of the stigma and stereotypes associated with homelessness.

"Our clients are, and continue to be the inspiration for our work every day."

Introducing 29 people and one dog, that have made an indelible impact on many of our team. We hope in turn, that Wintringham has changed their life for the better.



01

Tiny Wintringham Legend

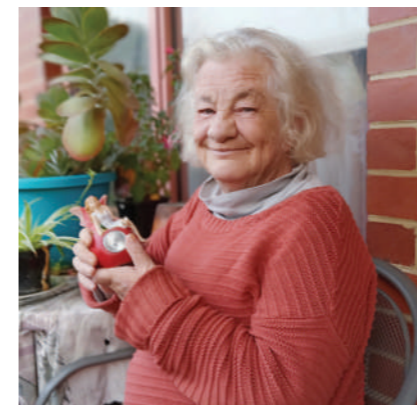
Tiny's successful fight against what appeared to be big obstacles, continue to inspire the organisation that was named in his honour.



02

Cynthia Port Melbourne

"I love the recreation activities - I get to go to hydro three times a week. And I love the art shows and art classes here."



Nola Williamstown

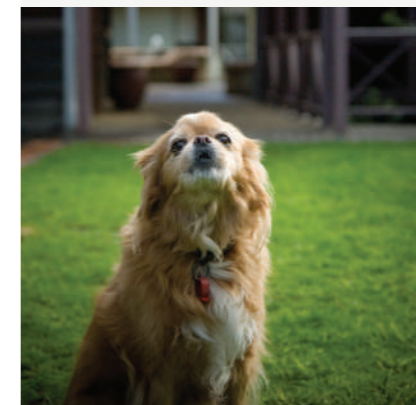
"Thirteen years and I'm still here! I don't like the food... but I met my current fiancé and we live in adjoining rooms, with no intention of leaving."

03

Goldie Legend

Goldie landed on her paws at Wintringham after her owner Pat died, it was as if everyone's love for Pat then transferred to Goldie.

04



Wendy Patrick Walsh

"I have been with Wintringham for many years now. Wintringham is my family. They're all I've got."

05



**Tom
McLean Lodge**

“I see what it does for people every day – people getting supported and helped, and looked after.”

06

**Cheryl
Gilgunya**

“Wintringham is the best place I’ve ever lived, because the staff have helped me to do what I want to do.”

07



**Blacky
Eunice Seddon**

“I like it here at Wintringham - I feel safe and there are good people here. I have a home now... but I would rather be in Moe!”

08



11

Trevor Ebsworth House

“This is the longest time I have ever lived in the one place. Without their support I would not be able to live the life I have, and I am grateful.”



12

Wayne Delahey

“I have been with Wintringham for 22 years, and I am truly grateful that I found Wintringham when I did and haven’t looked back.”



09

Lorraine Delahey

“Wintringham gave me a secure roof over my head and since moving in I have made some really good friends.”



10

Kathleen Ron Conn

“I have been at Wintringham since 2015 - I get to go shopping, go out for coffees, and staff talk to me - even when I’m in the shits.”



**Troy
Eunice Seddon**

“Wintringham gave me a permanent, secure place to live and I have access to services, like the physio, which I didn’t before.”

13

**Glen
Guildford Lane**

“I really appreciate the care and support given to me by Wintringham over the last ten years of my life.”

14



Pat Shore Legend

Pat, who spent many nights sleeping homeless in the cold, passed away in a warm bed, housed by an organisation that loved him as family.

15





16

Debra Lionsville

“There is a real sense of community here and I have access to activities and support - I feel well looked after.”



17

Richard Legend

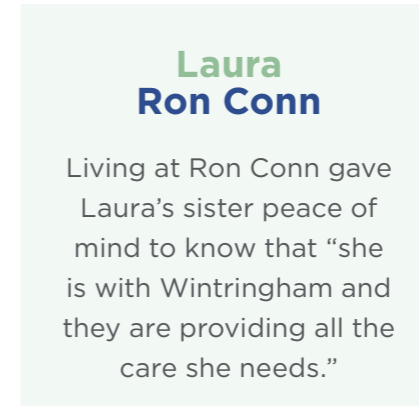
From successful jeweller and business owner to living on the streets. Richard’s jewellery lives on, reminding people that, for all of its sorrows, life offers some pearls.



Caroline Shepparton

“The (NDIS) funding will allow me to get all the support I need to live independently. I couldn’t have done it without Wintringham.”

21



Laura Ron Conn

Living at Ron Conn gave Laura’s sister peace of mind to know that “she is with Wintringham and they are providing all the care she needs.”

22



Joey Gilgunya

“I like it here because they look after me, and I’m a free man.”

23



Ingrid Ron Conn

“Wintringham saved me from feeling isolated. I feel safe and taken care of now.”

18



Jesse Legend

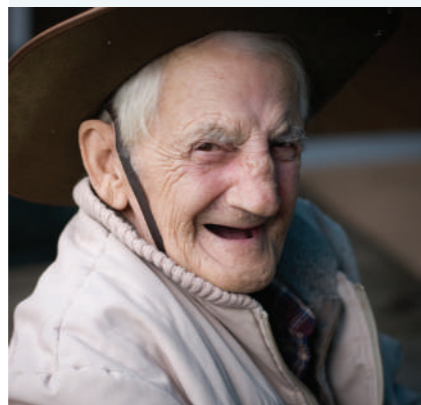
Jesse loved his freedom and made good use of coming and going from Wintringham as he pleased.

19

Jules Jack Gash

“I have been with Wintringham for about 15 years and I have discovered my passion for life here. What a privilege to be part of this wonderful organisation.”

20



24

Karlene Angus Martin

“I have come forward since living here. The staff are very caring and thoughtful - they help me get out.”



25

Pat McLean Legend

McLean Lodge in Flemington, was Wintringham’s first residential service. It was named in memory of our friend Pat McLean who passed away before the building was completed.



26

Deborah Atkins Terrace

“Moving to Atkins Terrace on 23rd of December 2018 was the best day of my life.”



27

Kristian Port Melourne

“I get to go on holidays every year, I have a warm bed, food, and I’m still able to have a drink.”



Geoff McLean Lodge

“I’m happy here, I have friends and the staff are nice, it’s a good place to be. I reckon I’ve got a good life now.”

28

Anne Williamstown

“I have a new way of life that means I can enjoy retirement without the fear of living on the streets.”

29



Arthur Legend

Arthur, a Wintringham original, loved horse racing, beer and cigarettes. While he had access to the care he needed, he always maintained his independence.

30



Artwork by Stephen Whittaker.

Art Show tribute to Stephen’s life

The Wintringham Art Show is an important date on the organisational calendar every year; however, 2019 was a special year for one very good reason - to celebrate the work and life of artist, friend and client, Stephen Whittaker.

Southern Community Manager Kelly Jackson tells us a little about his story: “Stephen Whittaker was someone who first came to Wintringham seeking assistance with finding a safe home. Through our Outreach service and Home Care Package program we were able to support and assist Stephen to find his forever home at our independent living units in East Bentleigh.”

“Stephen continued to live there with support from his Home Care Package whilst he battled illness until sadly his death in 2018. Stephen was a very private almost reclusive person. We were very fortunate to have him open up, and share with many of us his story, in the hope that he could help others while also helping himself.

“He was a very talented artist, not that he would say that. His art was a collection of inspirations he took

from his surroundings, pictures in magazines, his struggles with mental illness, his troubled childhood and his journey through life.

“Stephen never wanted his art to be sold, only to be enjoyed.

“We’re very lucky that a film maker approached us in early 2018 wanting to produce some short films about our clients, and surprisingly Stephen stepped up and offered to be the subject of one of the two documentaries created. The premiere preview screening at this year’s Art Show launch brought a tear to many in the audience, and reminded us of the battles many of our clients deal with, just to get through every day,” said Kelly.

The exhibition titled, ‘Unstoppable: Breaking the Barriers’ was a tribute to those who have struggled with stereotyping and prejudice. Highlighting Wintringham’s social justice values, the art show exhibited works from incredible people, who Wintringham supports to live a dignified life.

Sincere thanks to Victoria University MetroWest for providing the gallery space in Footscray free of charge.

Lifetime of achievement

Congratulations to our Chief Executive Officer and Founder Bryan Lipmann AM, who was awarded the Beth Thomson Lifetime Achievement Award, at the 2019 Victorian Homelessness Achievement Awards in October.

Presented by Victoria's Council for Homeless Persons (CHP), at the Victorian Homelessness Conference, the award recognises a sector leader with passion for creating exceptional responses to homelessness, which is matched by dedication to those served.



Bryan with Wintringham team members, celebrating his outstanding achievement at the conference.

“Since Bryan began his career in social work over 30 years ago, his fierce determination and firm belief in social justice for all regardless of financial means or background, has been steadfast,” said Deputy Chief Executive Officer Michael Deschepper.

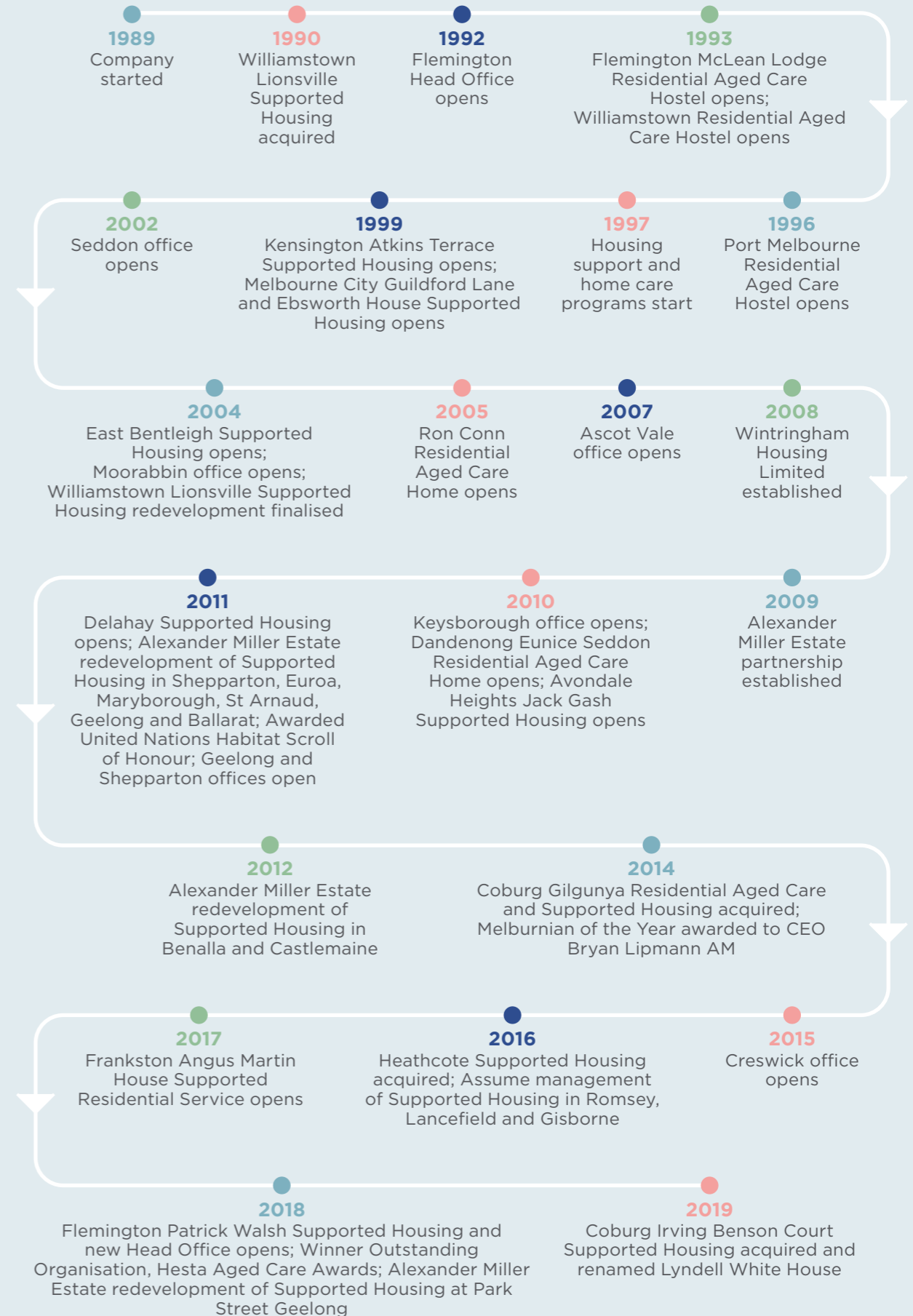
“I’m sure I speak for the whole Wintringham community when I say we’re extremely proud of Bryan’s achievements. We, our clients, residents and the broader community see the outcomes of his advocacy work and passion to give homeless, marginalised elderly Australians a home until stumps.

“This is well-deserved recognition of Bryan’s perseverance, dedication and unwavering personal strength to continue advocating for the fundamental human rights of the elderly homeless.”



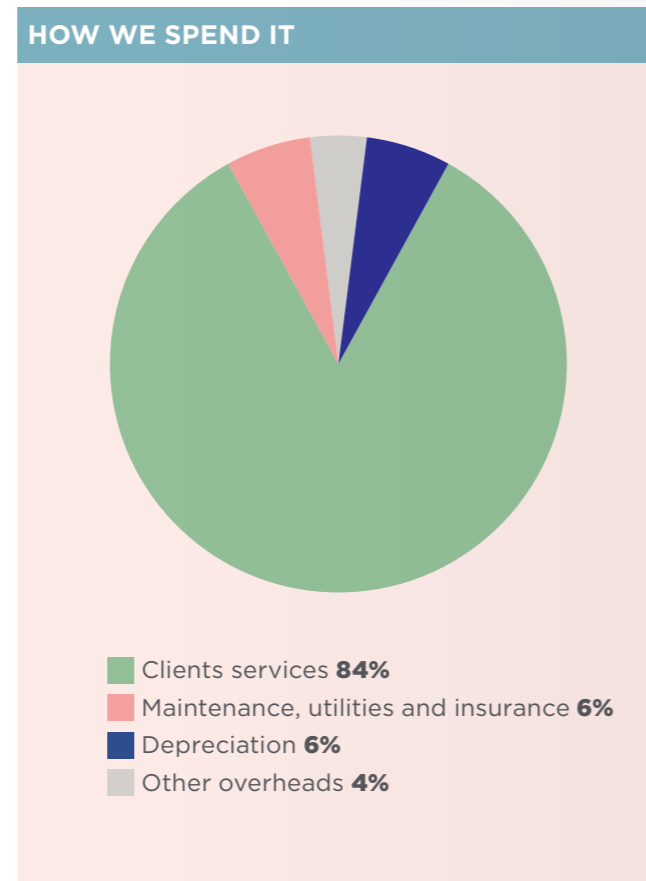
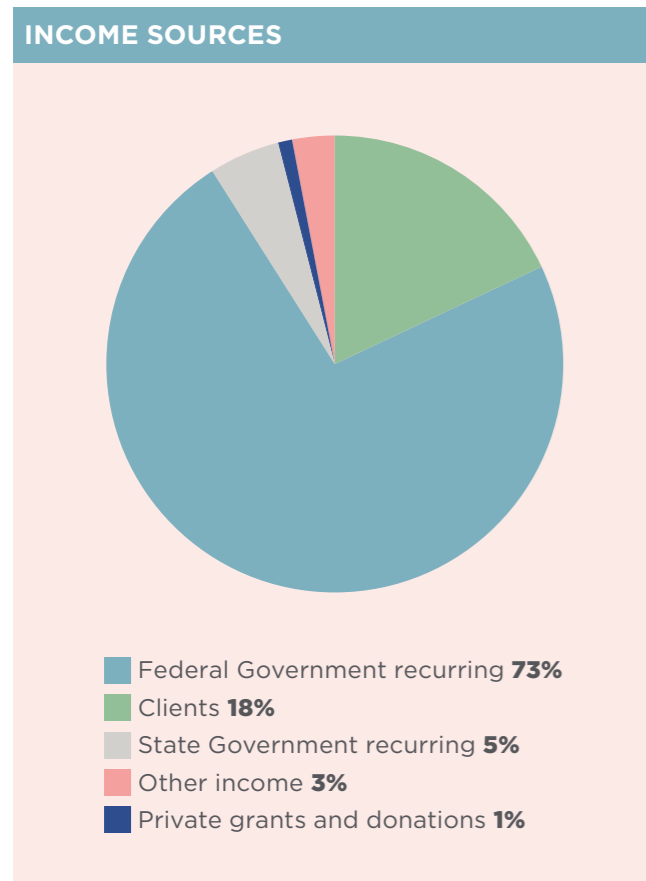
Client Bob Menzies and Bryan at the Williamstown site in 1989.

Our timeline

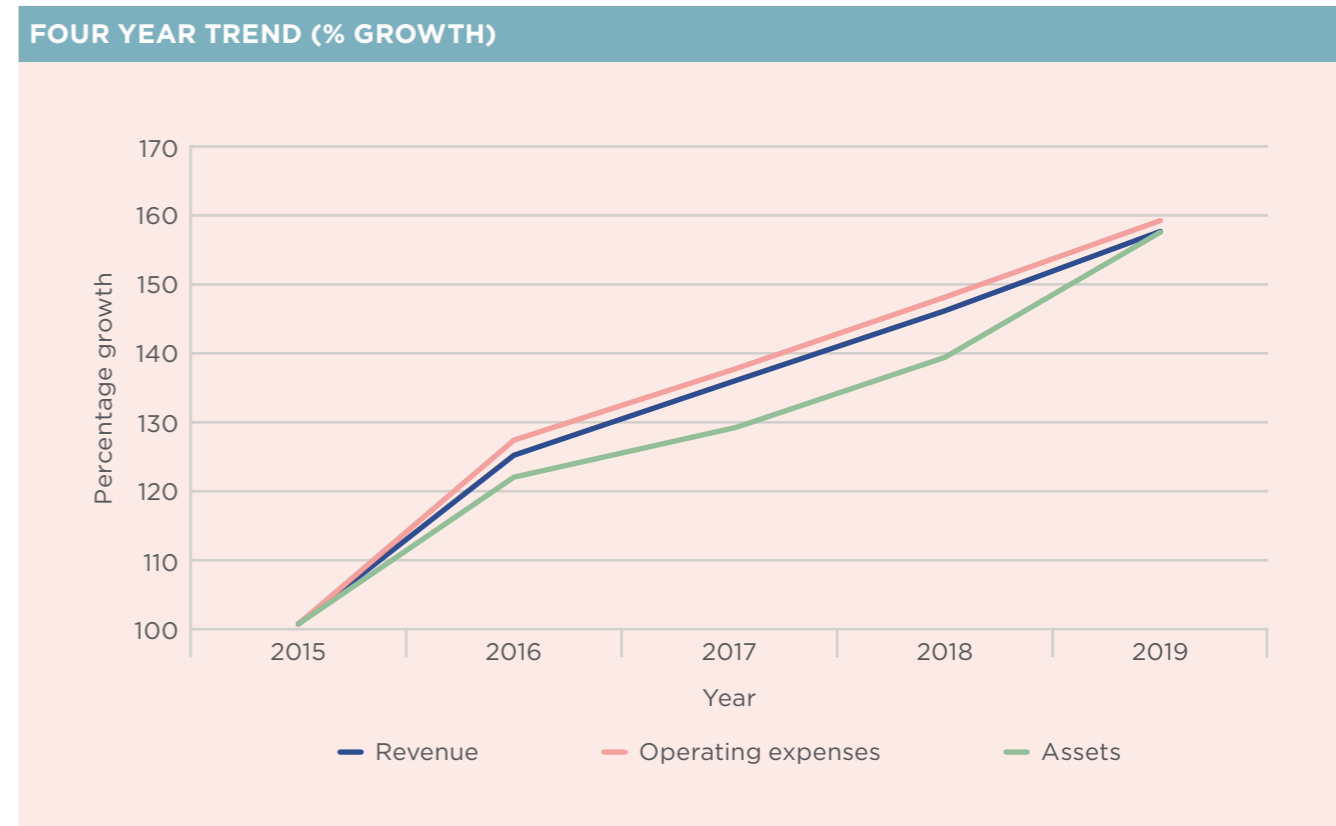


Financials

STATEMENT OF FINANCIAL POSITION AS AT 30 JUNE 2019		2019 \$	2018 \$
Current Assets	Cash and cash equivalents	22,096,110	12,599,256
	Trade and other receivables	217,759	442,897
	Inventories	70,888	68,610
	Other current assets	205,731	201,291
	Total Current Assets	22,590,488	13,312,054
Non-Current Assets	Investment property	488,093	497,143
	Property, plant and equipment	100,822,179	95,888,896
	Total Non-Current Assets	101,310,272	96,386,039
	Total Assets	123,900,760	109,698,093
Current Liabilities	Trade and other payables	9,730,756	8,870,562
	Short term borrowings	9,752,926	8,035,971
	Short term provisions	7,458,865	6,960,871
	Total Current Liabilities	26,942,547	23,867,404
Non-Current Liabilities	Long term borrowings	781,494	642,668
	Long term provisions	486,635	347,341
	Total Non-Current Liabilities	1,268,129	990,009
	Total Liabilities	28,210,676	24,857,413
	Net Assets	95,690,084	84,840,680
Equity	Reserves	3,507,554	3,507,554
	Accumulated funds	92,182,530	81,333,126
	Total Equity	95,690,084	84,840,680



STATEMENT OF COMPREHENSIVE INCOME FOR THE YEAR ENDED 30 JUNE 2019	2019 \$	2018 \$
Revenue from operating activities	53,847,153	49,765,566
Other revenue	1,151,016	1,136,237
Total revenue	54,998,169	50,901,803
Employee benefits expense	39,420,525	37,302,411
Finance costs	142,059	66,234
Impairment Loss	261,682	0
Resident and client services	7,039,047	6,312,564
Property maintenance, utilities and insurance	3,470,495	3,069,720
Administration and other expenses	1,813,946	1,901,874
Total expenses	52,147,754	48,652,803
Surplus before depreciation	2,850,415	2,249,000
Depreciation on property, plant and equipment	3,104,380	2,702,189
Net (deficit) after depreciation and before capital items	(253,965)	(453,189)
Revenue from capital grants, sale of property and donations	11,103,369	5,253,950
Net surplus for year	10,849,404	4,800,761



STAFF PROFILE AS AT 30 JUNE 2019	2019	2018
Total staff	677	635
Full time staff	120	121
Part time staff	429	410
Casual staff	128	104
Average age of staff	48	47
Male (percentage of male staff)	18%	20%
Female (percentage of female staff)	82%	80%

Financials

CLIENT PROFILE AS AT 30 JUNE 2019		2019
Client assets	With no assets upon admission*	67%
	With less than \$10K upon admission	87%
Average stay (years)	Home Care	3.5
	Residential Care	4.2
	Housing	3.7
Types of pension	Aged (%)	76%
	Disability Support (%)	23%
	DVA (%)	1%
Average age	Home Care	75
	Residential Care	74
	Housing	74
Male residents and clients†	Home Care	328
	Residential Care	199
	Housing	284
Female residents and clients†	Home Care	363
	Residential Care	80
	Housing	272

* 2005 figure was 22 per cent which shows this figure has more than tripled in 14 years.

† Wintringham provides services to additional clients through Outreach and Housing Support.



How you can help us

Wintringham is a not-for-profit organisation focused on delivering quality aged care, housing and support services to people aged 50-plus who have experienced homelessness, are at risk or vulnerable to homelessness.

All profits are 100 per cent reinvested into our organisation.

Please visit our website, and you may donate through our secure portal: www.wintringham.org.au/donations

As a donor you can be assured that your gift will be used efficiently, responsibly and directly for the assistance of people in need.

Should you be interested in a larger philanthropic partnership, or including us in your will, please contact our Head Office on (03) 9376 1122 or admin@wintringham.org.au

Head Office

136 Mt Alexander Road
PO Box 193
Flemington Vic 3031

T (03) 9376 1122
F (03) 9376 8138
E admin@wintringham.org.au

wintringham.org.au



*For advice and information call
03 9034 4824*

Wintringham
ABN 97 007 293 478
Wintringham Housing Limited
ABN 84 129 707 937

